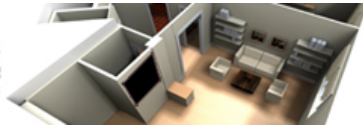


# IE INSTALLATION EUROPE

audio ■ video ■ lighting



## Case study - Royal Opera House upgrades to ETC Unison Paradigm

08 February 2012

Story Code : dh98



ETC's Unison Paradigm plays a starring role at a refurbishment of the architectural lighting control at London's Royal Opera House.

When the Royal Opera House installed Unison architectural lighting control for the stage and side stage areas as part of the original 1999 refurbishment, it was recognised that lighting control systems will be eventually replaced as new and better products are developed. When Senior Lighting Manager Nick Ware and his team members decided it was due for replacement, they understandably looked first at the updated version of the product: Unison Paradigm.

Lighting systems manager Paul Hornsby explains: "The system has remained on 24 hours a day, 7 days a week for the last 11 years, and has served us well. But it was time to consider replacing it. We talked to colleagues at other venues across the country, doing extensive research into the systems they were using and discussing whether a different system might serve our needs better, but always came back to ETC's updated architectural product, Unison Paradigm – one which uses the same wiring and with a similar style of programming.

"We knew the replacement had to be in 2011, as with the Olympics this year, we may not get another opportunity for at least two years. The system controls all of the venue's house lights, as well as backstage lighting for the main house, yet we only had a two-week break where the house was dark; there was no option for any part of it to not be in operation when people came back from their summer break. Steve Chappell from Stage Electrics was really helpful in getting everything fitted and working in the two-week dark period.

Pages: 1 [2](#) [3](#)

[Next](#) ▶

Share this story



### Related stories

- Conference venues – pull down ceiling boxes
- Case study - Royal Opera House upgrades to ETC Unison Paradigm
- Vaddio launches AutoTrak 2.0 camera tracking system
- Meyer Sound expands low voltage product line with three new loudspeakers

### FEBRUARY ISSUE NOW ONLINE



- \* ISE: The final preview
- \* Green AV: Use your knowledge
- \* Harpa Concert Hall, Reykjavik
- \* IPTV: Growing market

[Read this month's digital edition](#) →

[Back issues online](#) →

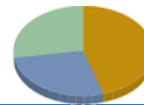


Advertisement

### EVENTS

- Oct 9-13** InfoComm Middle East and Africa – Dubai, UAE
- Oct 9-13** GITEX Technology Week – Dubai, UAE
- Oct 13-15** Viscom & Digital Signage World, Dusseldorf, Germany
- Oct 24-30** LDI/Live Design, Orlando, USA

### MARKET SURVEYS



IE's surveys explore industry differences by territory across Europe. Add your response for **Russia** here. >

### Twitter

ISEDaily **Correction: ISE Daily digi edns:**  
<http://t.co/pNGeuOHx> (Day 1), <http://t.co/teP93Rhf> (Day 2) <http://t.co/kU7Z3urp> (Day 3) #ise2012 #avtweeps  
 4 days ago · reply · retweet · favorite

ISEDaily **The ISE Daily digital editions:**  
<http://t.co/mrlcqNUU> (Day 1), <http://t.co/PqyzV13E> (Day 2) <http://t.co/H0Bkr5E6> (Day 3) #ise2012  
 4 days ago · reply · retweet · favorite

### SUBSCRIBE



[GO](#)



[GO](#)

- IE RESIDENTIAL ▶
- IE BUYERS GUIDE ▶
- IE TECHNOLOGY FOR ARCHITECTS ▶
- PSNE, TVBE, Music Week Magazines ▶



Tuesday  
**13th**  
March